

Технические характеристики

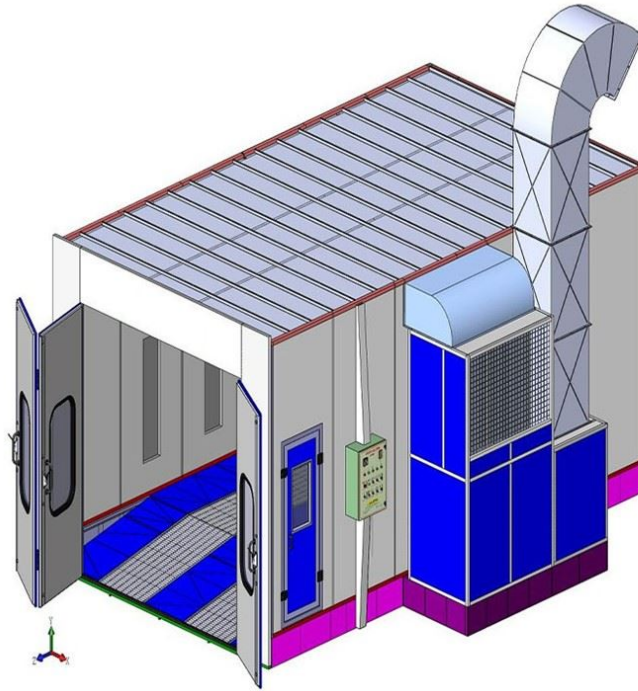
По вопросам продаж и поддержки обращайтесь:

Алматы (7273)495-231
Архангельск (8182)63-90-72
Астрахань (8512)99-46-04
Барнаул (3852)73-04-60
Белгород (4722)40-23-64
Брянск (4832)59-03-52
Владивосток (423)249-28-31
Волгоград (844)278-03-48
Вологда (8172)26-41-59
Воронеж (473)204-51-73
Екатеринбург (343)384-55-89
Иваново (4932)77-34-06
Ижевск (3412)26-03-58
Иркутск (395)279-98-46
Россия (495)268-04-70

Казань (843)206-01-48
Калининград (4012)72-03-81
Калуга (4842)92-23-67
Кемерово (3842)65-04-62
Киров (8332)68-02-04
Краснодар (861)203-40-90
Красноярск (391)204-63-61
Курск (4712)77-13-04
Липецк (4742)52-20-81
Магнитогорск (3519)55-03-13
Москва (495)268-04-70
Мурманск (8152)59-64-93
Набережные Челны (8552)20-53-41
Нижний Новгород (831)429-08-12
Киргизия (996)312-96-26-47

Новокузнецк (3843)20-46-81
Новосибирск (383)227-86-73
Омск (3812)21-46-40
Орел (4862)44-53-42
Оренбург (3532)37-68-04
Пенза (8412)22-31-16
Пермь (342)205-81-47
Ростов-на-Дону (863)308-18-15
Рязань (4912)46-61-64
Самара (846)206-03-16
Санкт-Петербург (812)309-46-40
Саратов (845)249-38-78
Севастополь (8692)22-31-93
Симферополь (3652)67-13-56
Казахстан (7172)727-132

Смоленск (4812)29-41-54
Сочи (862)225-72-31
Ставрополь (8652)20-65-13
Сургут (3462)77-98-35
Тверь (4822)63-31-35
Томск (3822)98-41-53
Тула (4872)74-02-29
Тюмень (3452)66-21-18
Ульяновск (8422)24-23-59
Уфа (347)229-48-12
Хабаровск (4212)92-98-04
Челябинск (351)202-03-61
Череповец (8202)49-02-64
Ярославль (4852)69-52-93



Q2610 Sand Blasting Room

Processed workpieces and parameters Technical data of Q2610 Sand blasting booth Cleaning effect

Description

Processed workpieces and parameters

1	Max. Workpiece size (L*W*H)	7*3.5*2.5 m
2	Max. Workpiece weight	Max. 5 T
3	Finish level	Can achieve Sa2-2 .5 (GB8923-88)
4	Processing speed	30-60 m ³ /min (Operator start different blasting guns quantity)
5	Surface roughness	40~75 μ (Depend on abrasive size)
6	Suggest abrasive	Grinding steel shot, Φ0.5~1.5
7	Sand blasting room inside dimension (L*W*H)	15*8*6 m
8	Electric power supply	380V, 3P, 50HZ or customized
9	Pit requirement	Waterproof

Technical data of Q2610 Sand blasting booth

1	Blasting chamber		Retardant sandwich composite panels	50 mm (0.6 mm galvanized sheet on each side of composite panels)
			Support frame	50*50 mm, 100*100 mm rectangle steel
			Protection plate	4 mm white wear resistant rubber linear
			Steel grilling	3 mm screen hole with steel support
			Gate	Size (W*H): 4.4*4.5 m
				Model: Sliding doors with 3 mm rubber protection
				Quantity: 1
			Emergency door	W*H=900*2000 mm
2	Shotblasting system		Blasting capacity	30 kg/min
			Abrasive storage volume	0.8 m ³
			The nozzle length	2*20 m
			Number of Blasting Guns	2 pcs
			Number of sandblaster	1 set
3	Abrasive circulatory system	Screw conveyor	Conveying capacity	15 T/H
			Screw diameter	200 mm
			Total power	4*2.2 kw
			Quantity	4 sets
		Separator (with trommel)	Separating capacity	15 T/H
			Wind speed of separator	4-5 M/S
			Waste content of separator	≤1% (Episodic multistage winnowing full curtain flow)

			Quantity	1 set
		Bucket elevator	Lifting capacity	15 T/H
			Lifting speed	1.21 m/s
			Power	2.2 kw
			Quantity	1 set
5	Lighting system		Lamp	LED lamps
			Brightness	≥500 Lux
			Power	40*0.05 kw
6	Trolley system		Dynamic loading weight	10 T
			Rail model	30#
			Trolley quantity	1 set
			Trolley interval	3000 mm
			Trolley dimension	4000*6000 mm
			Total rail length	35 m
			Driving model	Manually
7	3D operating platform		Loading weight	200 kgs
			Size (L*W)	1200*1200 mm
			Lifting power	4*0.8 kw
			Traveling power	4*0.2 kw
			Quantity	One on each side
8	Dust removal system		Filtering material	Polyester coated filter cartridge
			Quantity	2 sets
			Fan power	2*18.5 kw
			Total pressure	2100 pa
			Ventilation volume	2*21000 m ³ /h
			Cartridge quantity	2*20 pcs
			Filtering area	600 m ²

		Dust falling way	Automatic back pulse
		Filtering level	Fireproofing, Antistatic
		Filtering accuracy	1 μm
		Back Pulse Quantity	10 pcs
9	Compressor air	Pressure: 0.5-0.7 Mpa;	Compressed air consumption: 14 m ³
10	Dust emission level	$\leq 80 \text{ mg/m}^3$	
11	Dust loading after clean	10 mg/m ³	
12	Noise	$\leq 95 \text{ dB}$	
13	Total electric power	About 54 kw	

Cleaning effect



If you are looking for new q2610 sand blasting room for sale, factory price, brand, made in China, hot sale, direct seller, and overseas q2610 sand blasting room from professional manufacturer, supplier and factory, please feel free to contact us, we are always at your needs of CE, customized, professional, competitive, high precision, new and good quality, and PUHUA q2610 sand blasting room. And welcome to wholesale products with good quality and professional design from us.



Sand Blasting Booth

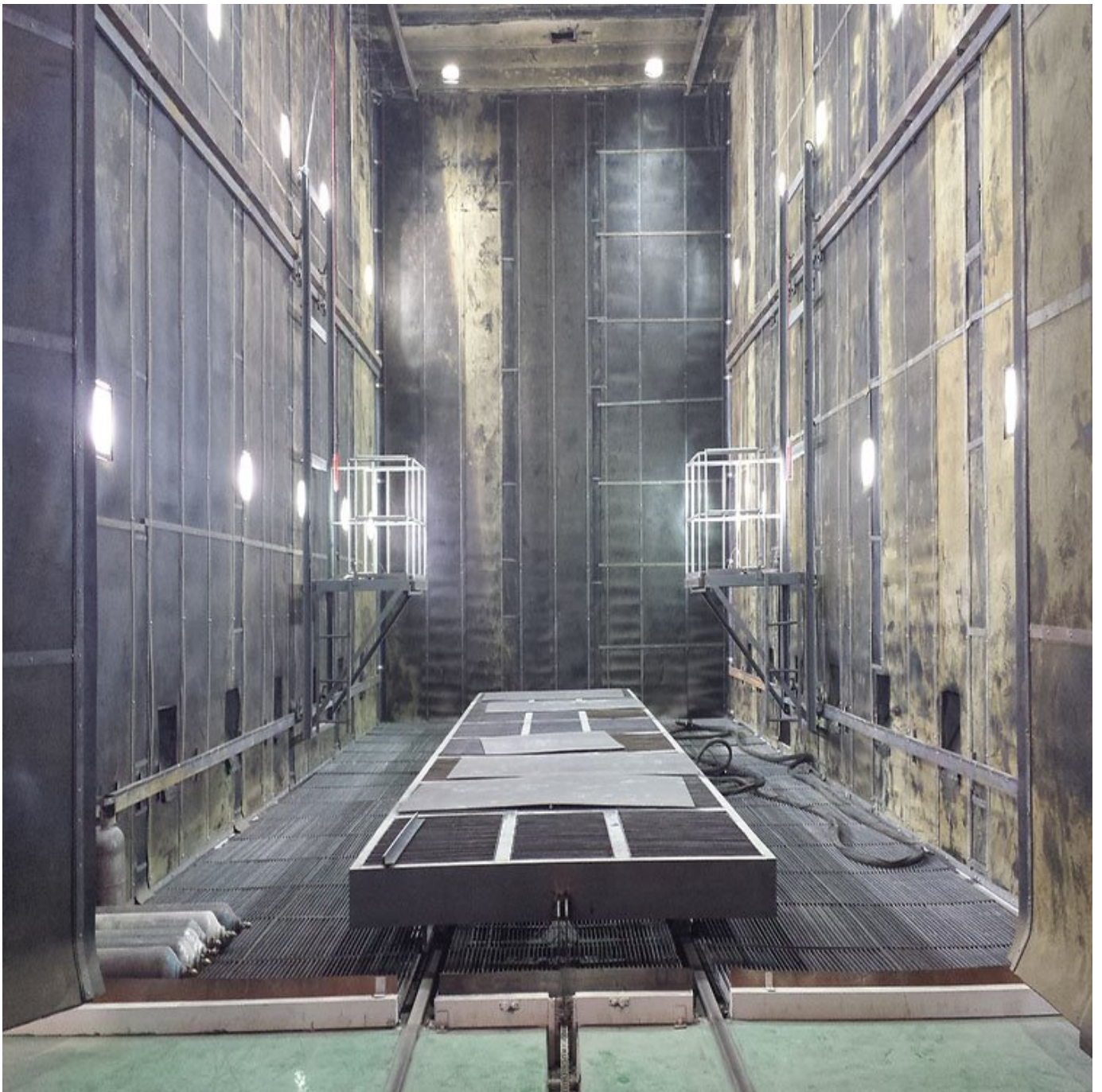
Product description Sand blasting room is mainly used to handle large parts or structures of special and complex work-piece, to achieve surface cleaning rust, increase the adhesion between the work-piece and coating and other effects. The spray gun installed in the sand blasting room can clean...

Description

Product description

Sand blasting booth is mainly used to handle large parts or structures of special and complex work-piece, to achieve surface cleaning rust, increase the adhesion between the work-piece and coating and other effects. The spray gun installed in the sand blasting room can clean the surface of the parts by using compressed air as power, metal abrasive as blasting agent. The work-piece is carried by the trolley, and the abrasive can be automatically sorted and automatically removed.





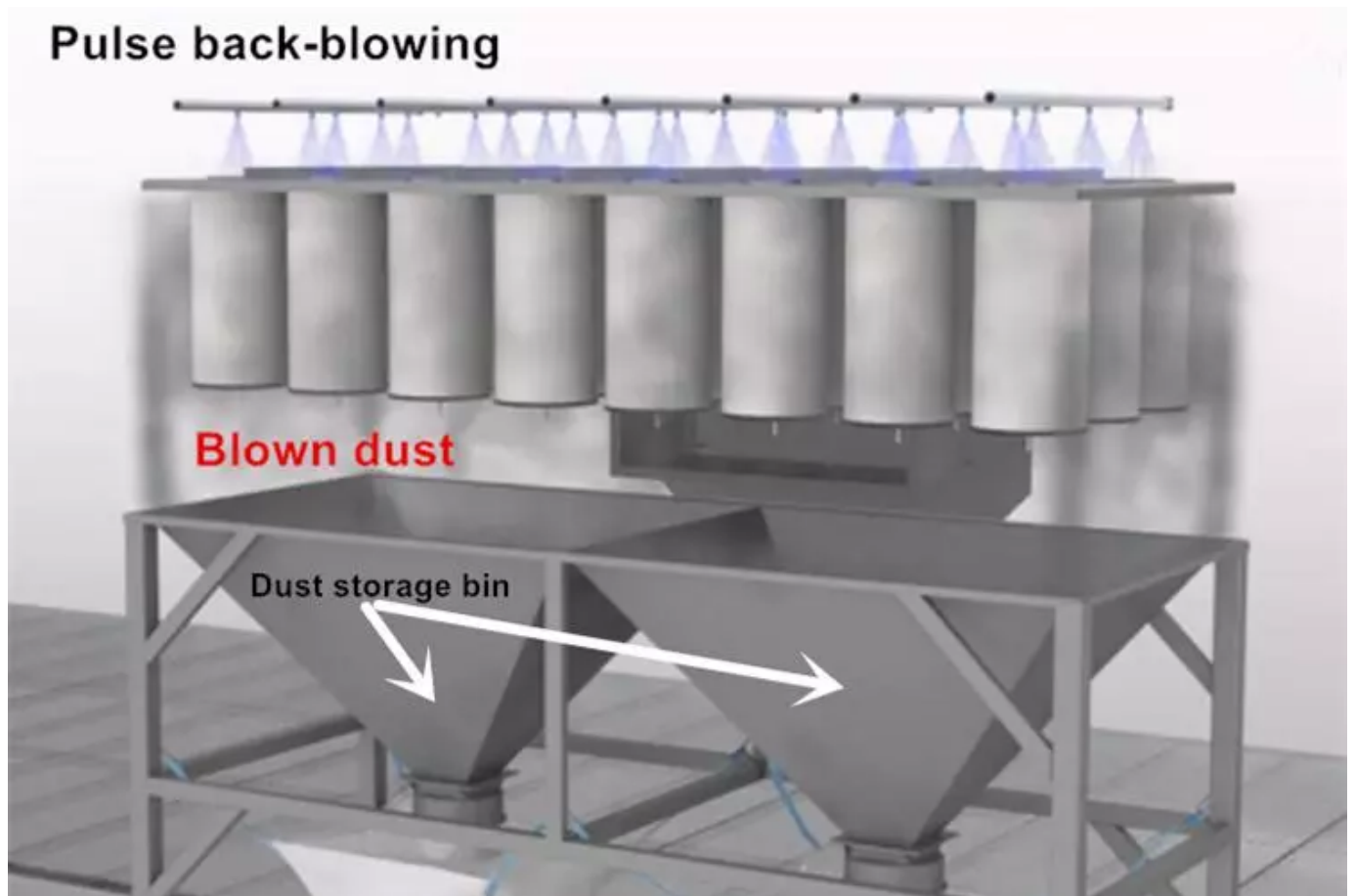
Electric control system

The blasting turbines, maintenance door, abrasive controller and abrasive circulation system are equipped with electric interlock and self-locking system to ensure the reliable operation of the equipment and the safety of operators.



High dust removal effect

The dust removal system consists of ducting system and filter cartridge dust collector. The emission standard can be lower 80 g/m^3 . The fan power is 30 kw, ventilation quantity is $26000 \text{ m}^3/\text{h}$.



Customizable trolley system

The trolley load-bearing is 10T. total length of rail is 35 m. To prevent the projectile wheel stuck phenomenon, there are polyurethane scraper in front of each wheel to strike off scattered abrasive on the track.



Structural characteristics:

Shot blasting system

The shot blasting system is equipped with 1 set sand blasting pot, 1-2 guns. We fully take into account the operation convenience of the workers, specifically increased the shot blasting chamber operating space, set lighting system and platform, so that workers can operate convenient, effective and comprehensive on piece parts for shot-peening.

This machine equipped with shot peening special protective mask, greatly improving the working environment, and protect the health of operating workers.

Shot distributing system

This machine adopts the patented shot valve produced of our company; it can accumulate a certain time in blasting, through the manual control to provide the shot ball to the blasting device.

Dust-removing system

This machine adopts Cartridge or bag type dust collector, is exhausted air produced during working. The dedusting efficiency is up to 99.6%, powder density is less than 100mg/m³, much stricter than the national standard.

Electric control system

Set shot ball circulatory failure alarm function, if any parts of the system fails, the above components automatically stop running, to prevent the shot ball stuck and burning power device.



Automatic Abrasive Recycling Sand Blasting Booth

Scraper Type Sand Blasting booth Qingdao Puhua provides industry with high quality, dependable blast room equipment. Scraper conveyor has advantage of high efficiency and energy saving, low failure rate.

Description

Scraper Type Sand Blasting booth

Qingdao Puhua provides industry with high quality, dependable blast room equipment and Plate pretreatment line, if you are interested in Plate pretreatment line. Please click **Plate pretreatment line** (<http://www.puhumachinery.com/qxy-series-steel-plate-pretreatment-line-color-coating-steel-plate-production-line-p00167p1.html>).

Scraper conveyor has advantage of high efficiency and energy saving, low failure rate.

Compared with screw conveyor mechanical recycling, can reduce the pit depth and reduce civil engineering cost. Compared with air suction type it can save lots of power, reduce machinery cost.

The equipment adopts reciprocating type scraper conveyor system, set 3 way scraper groove to avoid the trolley track. Bounce cylinder match reciprocating connecting rod as the power, constantly conveyor abrasive to screw conveyor on the tail end of blasting chamber.

The upper of scraper conveyor is steel grilling, avoid the large parts into the scraper groove. And the visual effect is good, easy to remove, easy to maintenance.

The pneumatic device of craper conveyor set sensing detection device, can test scraper working condition. Once cylinders damaged or compressed air line fault, suddenly reduce compressed air pressure and other malfunction, can feedback signal to PLC in time, also alarm to remind the operator, ensure equipment safe operation.

Industries that require this process include:

- Steel Fabricators
- Construction Equipment
- Railcars
- Steel Tanks
- Trailers
- Oil Field Equipment
- Ship Building

Qingdao Puhua offers a variety of reclaim floor designs and room configurations which allow us to design a blast room facility uniquely tailored to meet the economic production, safety and environmental concerns of each customer.

Sand blasting room composition

MainParts	Sandblastingchamber
	Sand (shot)StorageHopper
	Sandblastingdevice
	Separator
	Abrasiverecyclingsystem
	Lightingsystem
	Dustcollector
	Steelgrilling
	Trolleysystem
	Electriccontrolsystem

Abrasive recycling system

Parameter Recycling system	Manually recycling	Semi-auto recycling	Screw conveyor recycling	Scraper recycling	Suction recycling
-------------------------------	-----------------------	------------------------	-----------------------------	----------------------	----------------------

Type	Manually	Semi-auto	Automatic	Automatic	Automatic
Pit requirement	No pit	Part little pit	Deep pit	Little pit or no pit	No pit or little pit
Efficiency	Low	Low	High	High	High
Power consume	Low power	Low power	Medium	Medium	High
Maintenance parts	Little	Little	Mechanical parts	Scraper and mechanical parts	Honeycomb floor parts
Labor cost	More	More	Less	Less	Less



Sand Blasting Room

Products Feature : 1. This sand blasting booth/sand blasting room is primarily for cleaning big steel structural parts, vessel, truck chassis to remove the rusty spot, rusty layer and scale cinder on s

Description

Products Feature :

1. This sand blasting booth/sand blasting room is primarily for cleaning big steel structural parts, vessel, truck chassis to remove the rusty spot, rusty layer and scale cinder on steel to obtain a uniform, smooth and glossy metal surface allowing improved coating quality and higher anti-corrosion performance. To ensure the high shot-blasting performance and protect the wall, the grinding-resistant rubber is installed on the room wall.
2. Sand/Shot Blasting Booth is ideal for the large-scale structures, widely used in blasting of hulls, stoves, boilers and wind power parts, etc. Large structures can move inside the Blast Room on work cars sliding on rails.
3. Mainly composed with the Blasting Room, Air Blasting System, Sand Circulatory System, Dehumidify System and Dust Collector

Product Description

Main Parts	1. Sand blasting chamber
1.	2. Sand(shot) Storage Hopper

3.	4.Sand blasting device
5.	6.Bucket elevator
7.	8.Screw conveyor
9.	10.Elevator
11.	12.Conveyor
13.	14.Separator
15.	16.Abrasive recycling system
17.	18.Lighting system
19.	20.Dust Collector
21.	22.Steel grating
23.	24.Trolley system
25.	26.Electric control system



Automatic Abrasive Recycling Sand Blasting Room

Suction Type Sand Blasting Room Qingdao Puhua provides industry with high quality, dependable blast room equipment Bottom chamber is area of abrasive collection and suction channel, dedicated to collect

Description

Suction Type Sand Blasting Room

Qingdao Puhua provides industry with high quality, dependable blast room equipment

Bottom chamber is area of abrasive collection and suction channel, dedicated to collect abrasive, slag and dust. In the abrasive collection area is sealed inverted V type steel plate, in favor of recycling and collection of abrasive and dust.

Detachable honeycomb floor is a module combination of abrasive collection, it's our latest technology solution after many times optimization and improvement. This solution considered the wear and maintenance of honeycomb floor and recycling channel during the long-term use. The equipment maintenance is very simple and quick, avoid more accessories changing and reduce the maintenance cost in the long-term operation. The pit of this kind sand blasting booth is less than 0.5 m.

The maintenance of honeycomb floor is very simply and quick. Firstly its structure is very simply, less wearing parts and less maintenance parts. The honeycomb part is detachable and standard module combination, can be easily removal and find the maintenance point. Puhua made the

wearing parts to standard replacement parts, connected with flange, no need to weld when replacing the parts.

Industries that require this process include:

- Steel Fabricators
- Construction Equipment
- Railcars
- Steel Tanks
- Trailers
- Oil Field Equipment
- Ship Building

Qingdao Puhua offers a variety of reclaim floor designs and room configurations which allow us to design a blast room facility uniquely tailored to meet the economic production, safety and environmental concerns of each customer.

Sand blasting room composition

MainParts	Sandblastingchamber
	Sand (shot)StorageHopper
	Sandblastingdevice
	Separator
	Abrasiverecyclingsystem
	Lightingsystem
	Dustcollector
	Steelgrilling
	Trolleysystem
	Electriccontrolsystem

Abrasive recycling system

Parameter Recycling system	Manually recycling	Semi-aut o recycling	Screw conveyor recycling	Scraper recycling	Suction recycling
----------------------------------	-----------------------	----------------------------	--------------------------------	----------------------	----------------------

Type	Manually	Semi-auto	Automatic	Automatic	Automatic
Pit requirement	No pit	Part little pit	Deep pit	Little pit or no pit	No pit or little pit
Efficiency	Low	Low	High	High	High
Power consume	Low power	Low power	Medium	Medium	High
Maintenance parts	Little	Little	Mechanical parts	Scraper and mechanical parts	Honeycomb floor parts
Labor cost	More	More	Less	Less	Less



Sand Blasting Room For Tank

sand blasting room Main parts Sand blasting booths is a closed space, includes blasting system, abrasive circulatory system and rust removal system, etc. Sand blasting booths is mainly used for surface cleaning and strengthening of steel, castings, aluminum alloy parts and other parts. Through...

Description

sand blasting room

Main parts

1	Blasting chamber
2	Abrasive storage hopper
3	Blasting assembly
4	Bucket elevator
5	Screw conveyor
6	Elevator
7	Roller conveyor
8	Separator
9	Abrasive recycling system
10	Lighting system
11	Dust Collector
12	Steel grating
13	Trolley system
14	Electric control system

Sand blasting booths is a closed space, includes blasting system, abrasive circulatory system and rust removal system, etc. Sand blasting booths is mainly used for surface cleaning and strengthening of steel, castings, aluminum alloy parts and other parts. Through the shot blasting can remove the complex work piece surface contamination, the oxide skin, welding slag, the waste paint and so on, causes the work piece surface to be bright and clean, simultaneously reduce the work piece internal stress, enables the work piece surface to obtain the strengthening, thus achieves enhances the work piece surface and the intrinsic quality goal.



If you are looking for new sand blasting room for tank for sale, factory price, brand, made in China, hot sale, direct seller, and overseas sand blasting room for tank from professional manufacturer, supplier and factory, please feel free to contact us, we are always at your needs of CE, customized, professional, competitive, high precision, new and good quality, and PUHUA sand blasting room for tank. And welcome to wholesale products with good quality and professional design from us.



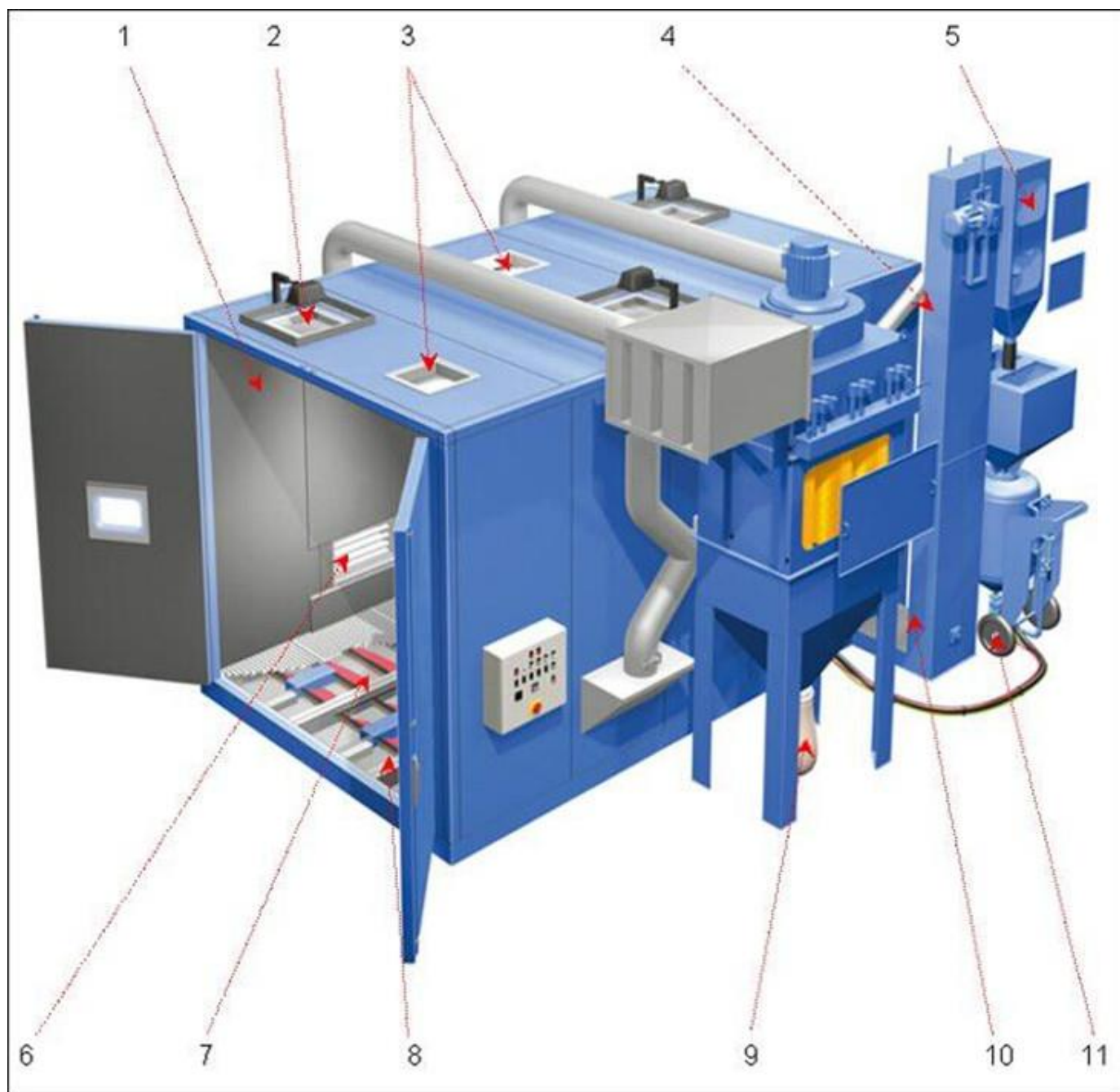
Sand Blasting Booth Price

Sand Blasting Booth China's sandblasting room can clean large steel structural parts, oil tanks, steel pipe outer walls and so on. Loved by foreign customers Each element of an Blast Room is engineered to be in balance with the other elements – this ensures that the flow of products, the...

Description

Sand Blasting Booth

China's sandblasting room can clean large steel structural parts, oil tanks, steel pipe outer walls and so on. Loved by foreign customers







Each element of an Blast Room is engineered to be in balance with the other elements – this ensures that the flow of products, the flow of abrasive, and the flow of dust is smooth and uniform.

After a thorough investigation and analysis of the objectives and goals of the blast room our team of engineers draw upon years of experience and an extensive installed base of blast rooms in operation around the world to ensure that the Blast Room proposal satisfies all of the criteria as well as allowing opportunities for future development.

As each Blast Room is designed specifically on a project by project basis the possibilities for customization are endless: multiple blasters operating on one room; product access through one

end or both ends of the blast room; abrasive recovery options including: sweeping pit, cross conveyor, U shape, H shape, and complete for automatic recovery with conveyor system or scrappers; down draft or cross draft dust extraction; automatic grit recycling incorporating magnetic separation.

For additional flexibility our company can provide a combined blast and paint room: once the blasting is completed and the abrasive recovered a separate paint extraction system is activated and painting of the product can begin. The reduced product handling provides additional quality control benefits as well as cost savings.



Ce Approved Abrasive Automatic Sand Blasting Room

Ce Approved Abrasive Automatic Sand Blasting Room Features and Parameters Automatic recycling sand blasting room is designed according to the product processing process and the product characteristic, it is mainly used for large forgings and castings welded steel structure ,engineering machinery...

Description

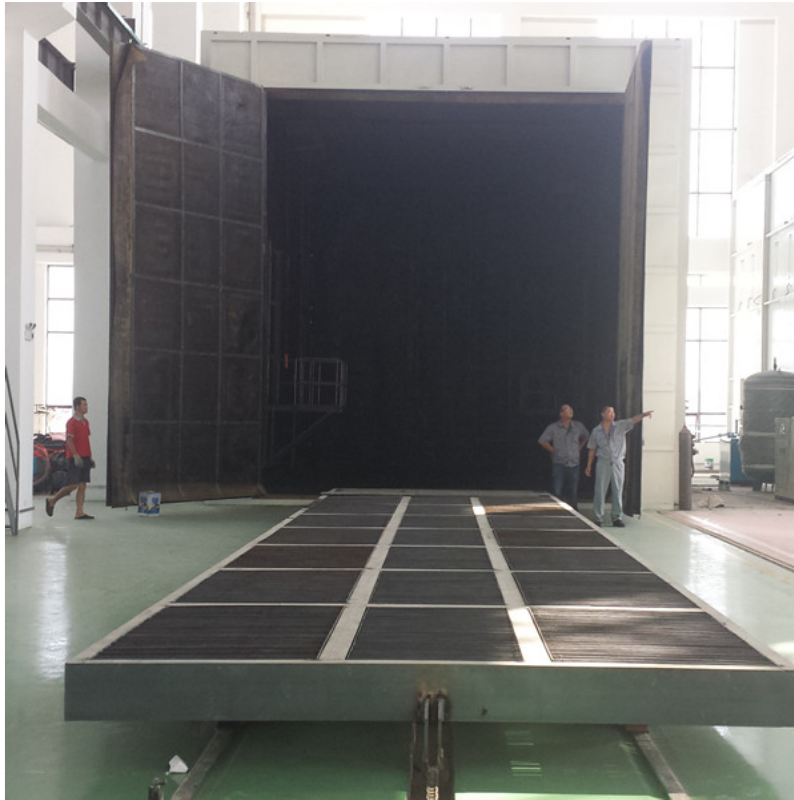
Ce Approved Abrasive Automatic Sand Blasting Room

Features and Parameters

Automatic recycling sand blasting room is designed according to the product processing process and the product characteristic, it is mainly used for large forgings and castings welded steel structure ,engineering machinery , industrial boilers, chemical machinery ,ship building ,etc, to remove surface oxide skin , rust ,and strengthen surface ,to improve the coating adhesion ,etc.



If you are looking for new ce approved abrasive automatic sand blasting room for sale, factory price, brand, made in China, hot sale, direct seller, and overseas ce approved abrasive automatic sand blasting room from professional manufacturer, supplier and factory, please feel free to contact us, we are always at your needs of CE, customized, professional, competitive, high precision, new and good quality, and PUHUA ce approved abrasive automatic sand blasting room. And welcome to wholesale products with good quality and professional design from us.



Shot blasting machine sand blasting room

Description

Product Details

Key Specifications/Special Features:

Shot blasting machine / sand blasting room

Metal workpiece surface treatment

In order to remove stress and improve surface lacquer quality and rot proofness of steel structure and steel

Primary Competitive Advantages:

Brand-name Parts

Guarantee/Warranty

Prompt Delivery

Quality Approvals

Any third-party trademarks or images shown here are for reference purposes only. We are not authorized to sell any items bearing such trademarks.

По вопросам продаж и поддержки обращайтесь:

Алматы (7273)495-231
Архангельск (8182)63-90-72
Астрахань (8512)99-46-04
Барнаул (3852)73-04-60
Белгород (4722)40-23-64
Брянск (4832)59-03-52
Владивосток (423)249-28-31
Волгоград (844)278-03-48
Вологда (8172)26-41-59
Воронеж (473)204-51-73
Екатеринбург (343)384-55-89
Иваново (4932)77-34-06
Ижевск (3412)26-03-58
Иркутск (395)279-98-46
Россия (495)268-04-70

Казань (843)206-01-48
Калининград (4012)72-03-81
Калуга (4842)92-23-67
Кемерово (3842)65-04-62
Киров (8332)68-02-04
Краснодар (861)203-40-90
Красноярск (391)204-63-61
Курск (4712)77-13-04
Липецк (4742)52-20-81
Магнитогорск (3519)55-03-13
Москва (495)268-04-70
Мурманск (8152)59-64-93
Набережные Челны (8552)20-53-41
Нижний Новгород (831)429-08-12
Киргизия (996)312-96-26-47

Новокузнецк (3843)20-46-81
Новосибирск (383)227-86-73
Омск (3812)21-46-40
Орел (4862)44-53-42
Оренбург (3532)37-68-04
Пенза (8412)22-31-16
Пермь (342)205-81-47
Ростов-на-Дону (863)308-18-15
Рязань (4912)46-61-64
Самара (846)206-03-16
Санкт-Петербург (812)309-46-40
Саратов (845)249-38-78
Севастополь (8692)22-31-93
Симферополь (3652)67-13-56
Казахстан (7172)727-132

Смоленск (4812)29-41-54
Сочи (862)225-72-31
Ставрополь (8652)20-65-13
Сургут (3462)77-98-35
Тверь (4822)63-31-35
Томск (3822)98-41-53
Тула (4872)74-02-29
Тюмень (3452)66-21-18
Ульяновск (8422)24-23-59
Уфа (347)229-48-12
Хабаровск (4212)92-98-04
Челябинск (351)202-03-61
Череповец (8202)49-02-64
Ярославль (4852)69-52-93